

## IMPLEMENTATION OF MULTIMODAL PUBLIC TRANSPORTATION ROUTE PLANNER FOR METRO MANILA

**Chelcie G. NARBONETA**

G  
D I  
C  
A M  
L H , Q C 1108  
P  
E- : 1108@ .

**Kardi TEKNOMO**

A P  
D I  
C  
A M  
L H , Q C 1108  
P  
E- : @ .

### Abstract:

. O  
.  
, P  
, - M M  
, O P M  
M .  
M M ,  
,  
, A  
.

### Key words:

, , M M , O P

## 1. INTRODUCTION

. A .M. K *et al.* (2010)  
K. *et al.* (2007),  
,  
- . K *et al.* (2003)  
,  
. B N H (NH ,  
2009), 10.6 1.55 ; B  
I C (2011). 43.4  
. C ,  
,  
,  
; . O  
.  
"P P ." ,  
, 1  
,  
( F. H. M *et al.* (1999) ,

$$M \quad M \quad .$$

## 1.1 Scope and Limitations

G

.

. A ,

;

.

5

. O

, F

, , , , L 1, L 2, ( , ),

A  
M M M C , L P , M , M , M ,  
M , M P , N , P , P , P , Q C , J , ,  
 , P .

O P O I  
P P .

## 1.2 Rationale

## 2. PUBLIC TRANSPORT ROUTE PLANNERS

A . A ,

.

I E ( N ), J. *et al.* (2012) D - I

A A , K. *et al.* (2005) (A I ) (5) . I

P C . I , . P *et al.* (2008)

. A

(2007) D I . I ( I ) . B *et al.*

*et al.* (2010)

. I H K , I -

(P E ) L. P -C (2012). A

, F. H. M *et al.* (1999) "

" ( AD ) A

. . *et al.* (2012) I E IP G ,

. A

G , K. *et al.* (2009) ENO I ,

.

(2011), J. Q. L (2010), J. J *et al.* (2011)

L. *et al.*

- C . J. M. *et al.*

(2008)

. P K *et al.* (2005) GI - , , H

I .

G ,

, M , L 1, L 2 G ; ,

P A , C 2013,

G

C ; M M

. ,

. , P A C 2013,

G

, ,

G . H , . I

-

P .

.

## 3. FRAMEWORK

A , M

M

O P .

| .

### 3.1 OpenTripPlanner (OTP)



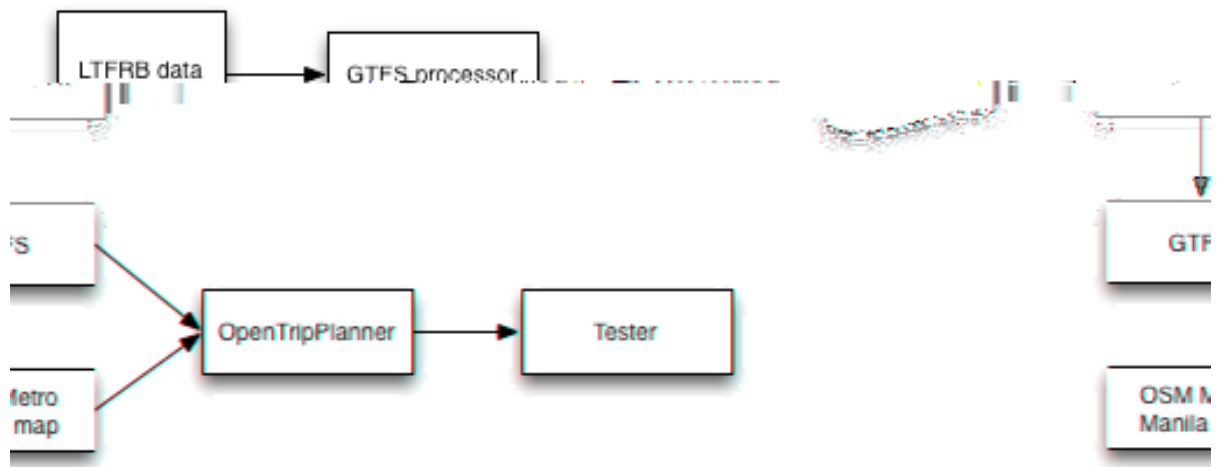


Figure 1. System Architecture

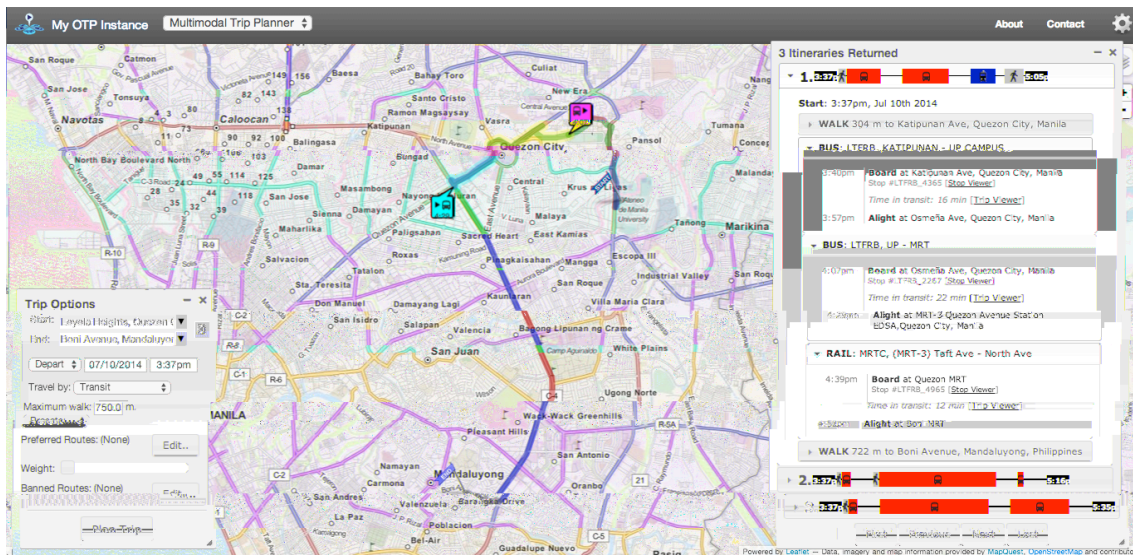
The system architecture is designed to process and test transit data. It starts with LTRFB data being processed by a GTFS\_processor, which then outputs GTFS data. This GTFS data is combined with OSM Manila data. Simultaneously, Metro map data is fed into the OpenTripPlanner. The OpenTripPlanner then outputs results to a Tester for validation and analysis.

#### 4. INITIAL RESULTS

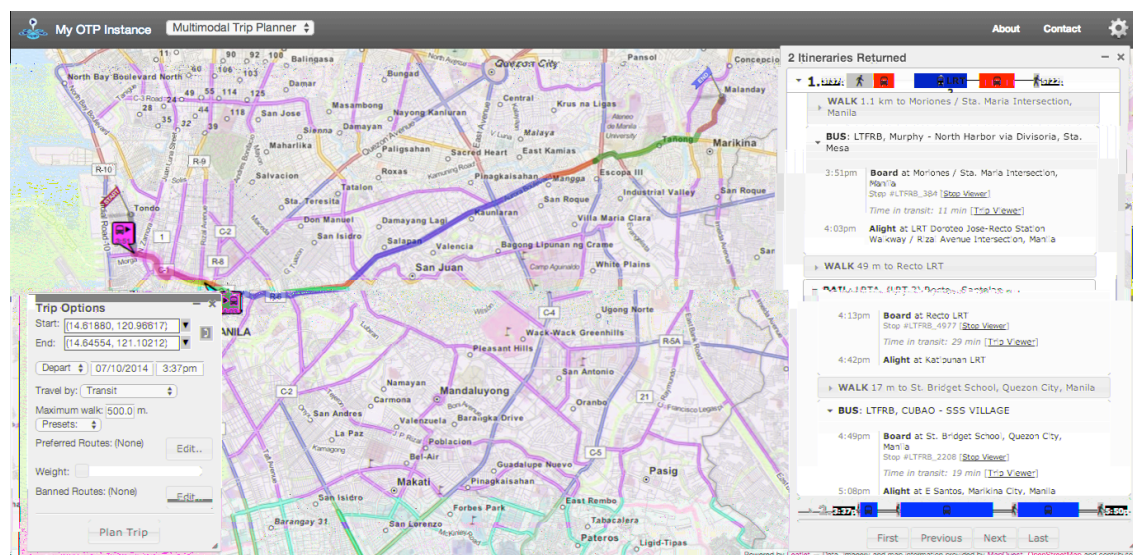
The initial results of the system architecture are presented below. The OpenTripPlanner (OTP) is a software application that provides route planning and information for public transit systems. It is designed to be a user-friendly interface for the public, allowing them to plan their trips and get real-time information about the system. The OTP is a web-based application that can be accessed from any computer with an internet connection. It is designed to be a user-friendly interface for the public, allowing them to plan their trips and get real-time information about the system. The OTP is a web-based application that can be accessed from any computer with an internet connection.

The initial results of the system architecture are presented below. The OpenTripPlanner (OTP) is a software application that provides route planning and information for public transit systems. It is designed to be a user-friendly interface for the public, allowing them to plan their trips and get real-time information about the system. The OTP is a web-based application that can be accessed from any computer with an internet connection. It is designed to be a user-friendly interface for the public, allowing them to plan their trips and get real-time information about the system. The OTP is a web-based application that can be accessed from any computer with an internet connection.

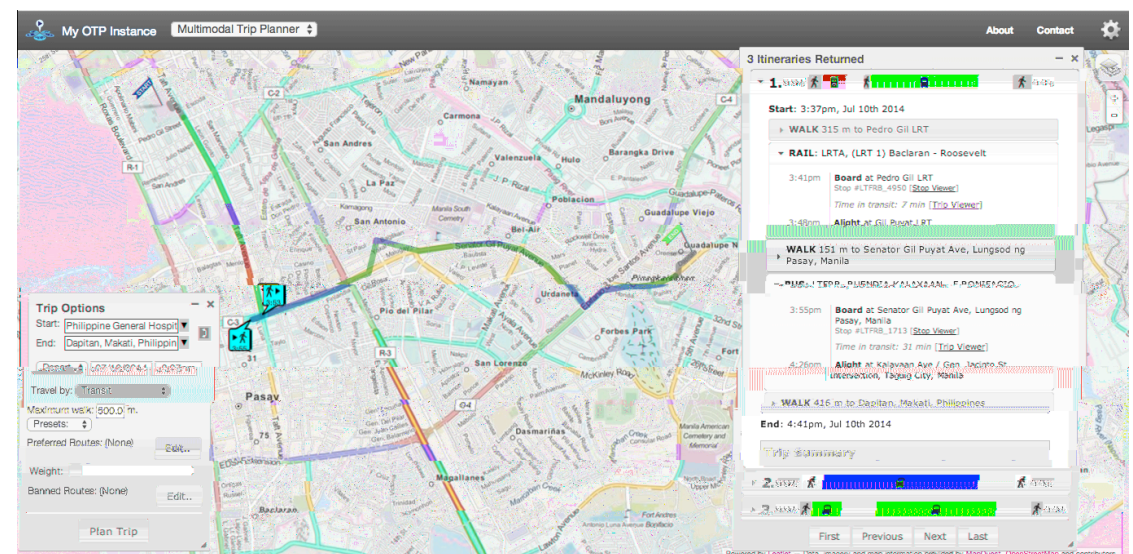
The initial results of the system architecture are presented below. The OpenTripPlanner (OTP) is a software application that provides route planning and information for public transit systems. It is designed to be a user-friendly interface for the public, allowing them to plan their trips and get real-time information about the system. The OTP is a web-based application that can be accessed from any computer with an internet connection. It is designed to be a user-friendly interface for the public, allowing them to plan their trips and get real-time information about the system. The OTP is a web-based application that can be accessed from any computer with an internet connection.



F 2. L H , Q C B A , M



F 3. , M M , M



F 4. P G H , M D , M

## 5. ANALYSIS

O P (1)  
 ,  
 ) M M ,  
 . H ,  
 ,  
 ,  
 .  
 .  
 .  
 .  
 .  
 . C ,  
 . A  
 ,  
 . A  
 .  
 . P ,  
 .

## 6. CONCLUSIONS

| M M O P .  
 G F L F B. H ,  
 G F .  
 , , ,

## ACKNOWLEDGMENT

D (DO -E D ) P H - E  
 N (PHE NE ).

## REFERENCES

- A , .A. , F. (2010) A . **Comp ter Science and Information S stems**, 7(4):789 811.  
 B , .J., H , E. L. (2011) E -  
 . **Technical report, Uni ersit of So th Florida (USF) National Center for Transit Research**, M 2011.  
 B , ., M , . (2007) I : -

. I **Intelligent Transportation S stems Conference, 2007. ITSC 2007.**  
IEEE, 666 671. IEEE.

DO C :  
:// . . / . ? = 2& = & =569: - -

J , J., K , B., , ., G , ., B , A. (2011) M  
-

K , . L , G. (2003)  
. **Transportation Research Part F: Traffic  
Ps cholog and Beha io r**, 6(1):1 21.

K , . M. G , N. (2010) A  
. **Global Jo rnal of Comp ter Science and Technolog** , 9(5):73 75.

K , P., , ., D. (2005) A  
. **Intelligent Transportation S stems, IEEE Transactions**, 6(1):26 37.

L , J. Q., , K., , L., , . B. (2010) A  
- - / . I P  
I C , 25, 65 76.

M H , B. (2011) . M 2009-2011  
, M , A 2011.

M , F. H., L , ., , L. H., C , L. H. (1999) A -  
. N B (N B) .

P , . ., K , E. (2008) A -  
. **Jo rnal of Intelligent Transportation S stems**, 12(1):13 28.

P -C , L. (2012) A -  
. **Intelligent Transportation S stems, IEEE Transactions**,  
13(2):983 988.

, K., G , N., L , ., B , . (2005) C - /  
. I **Proceedings of the 3rd S mposi m on LBS &  
TeleCartograph** , 2005, 235 239.

, K., B , . M , H.J. (2007) A : D  
. **Intelligent Transportation  
S stems, IEEE Transactions**, 8(1):31 42.

, ., F , M. (2012) -  
. **Procedia-Social and Beha ioral Sciences**,  
48:1294 1303.

, J. M., C , C. H., H , . C., (2008) D  
. I **Net orking, Sensing and Control, 2008. ICNSC 2008. IEEE  
International Conference**, 791 795. IEEE. , J., A , J. A.,  
H. (2012) A .  
**JUSPN**, 4(1):21 27.

B (2011). I C L A  
\$60.0 M G E F G A D 1.0 M ( \$

1.3 E ) P M M  
I P , J 2011.  
 , J., A , A., , H JP. A -  
 . **JUSPN**, 4(1):21-27, 2012.  
 , L., L , J. Q., , K., G , . D., L , M., , .B., M , M. A., M , J. A.  
(2011)  
 . **Transportation Research Record: Journal of the Transportation  
Research Board**, 2215(1):1-10.  
 , K. G., A , K. N., . (2009) D . **Intelligent  
Transportation Systems**, **IEEE Transactions**, 10(2):311-323.